



Special Resource Squad, Area 2 Community Resource Officer Unit

Prepared by Ofc. A. Hutzol

13 Apr 16

NCPC Meeting

What is Robbery?

- Robbery, or PC §211, is defined as the taking of property from a **person** by the use of force or fear
- A residential robbery, or PC §212.5, is commonly known as a “home invasion”
- A vehicle taken during a robbery is known as a carjacking, and is defined in PC §215

What is Aggravated Assault?

- Governed under PC §243(d) and 245, Agg. Assault is essentially violence between 2 or more people resulting in, or actions likely to cause, **great or grievous bodily harm or death**
- Much higher bar than “Simple assault” governed by PC §242

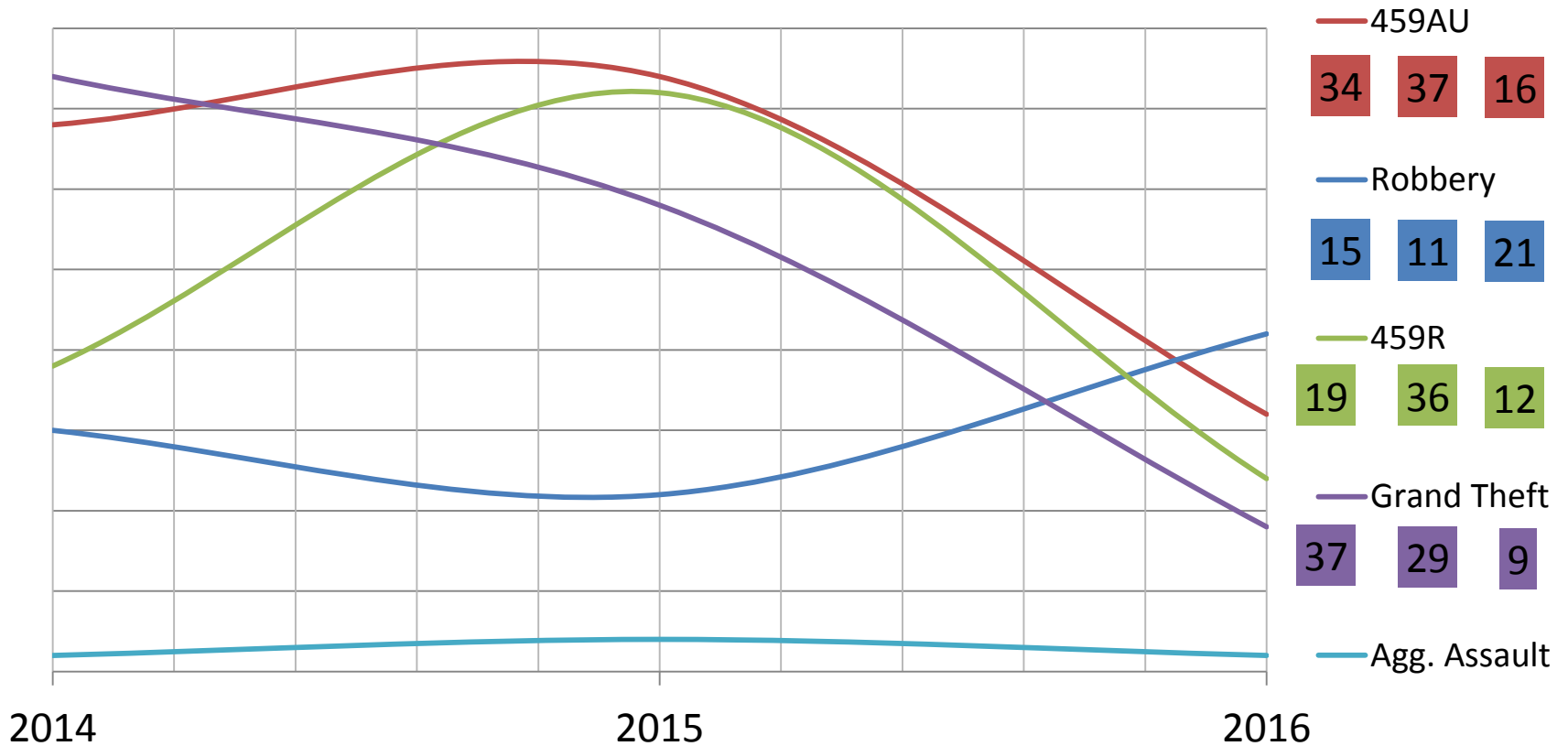
Proposition 47

- Into law in 2015, made previously felony crimes into misdemeanors with much lighter sentences, released many non-violent (those who committed property crimes like Burglary, Petty Theft, and the like)
- <http://www.washingtonpost.com/sf/national/2015/10/10/prop47/> - WA Post calls it “Get out of Jail Free Card”

RV's and Sleeping in Cars

- There is an Oakland Municipal Code prohibiting sleeping in cars; however:
- **Desertrain vs. City of Los Angeles (2012)** ruled that enforcing these Municipal Codes was *unconstitutional* and therefore must cease
- Call 510-777-3333 (if no emergency) and **then** e-mail Ofc. Hutzol for Welfare Check/Vehicle Check – Include **detailed** person/vehicle descriptions and leave contact information

The Data – How does 2016 stack up to 2015 & 2014 YTD?



Robbery Spike Jan-Feb 2016

- In January and shortly into February, a known group was completing robberies and carjackings
- After February's identification and apprehension of dozens of members, these crimes have dropped to **very low** levels
- Post-Apprehension: 1 PC 211, 1 PC 215 (in 2015, there were **5** total 211/215/212.5 by the same time: a **60%** reduction)

So, What Happened?

- Staffing levels at near record levels in recent history
- Specialized units such as CRO, Intel, and Gangs are either fully staffed or almost fully staffed allowing comprehensive and exhaustive investigations beyond patrol reporting