

North Oakland Crime

AREA 1

M. Mason 15 Dec 2009

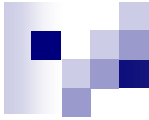


Robbery

Robbery is the taking of property from a person by force or fear of force. It can be armed or unarmed.

Burglary

Burglary is breaking into a structure (home, store, car, etc.) and stealing property.



North Oakland Year to Date Comparison

	2008
BURGLARY	1212
HOMICIDES AN SHOOTINGS	50
ROBBERY	365
VEHICLE THEFT	796

	2009	% Change
BURGLARY	1198	-1%
HOMICIDES AND SHOOTINGS	59	18%
ROBBERY	287	-21%
VEHICLE THEFT	555	-30%

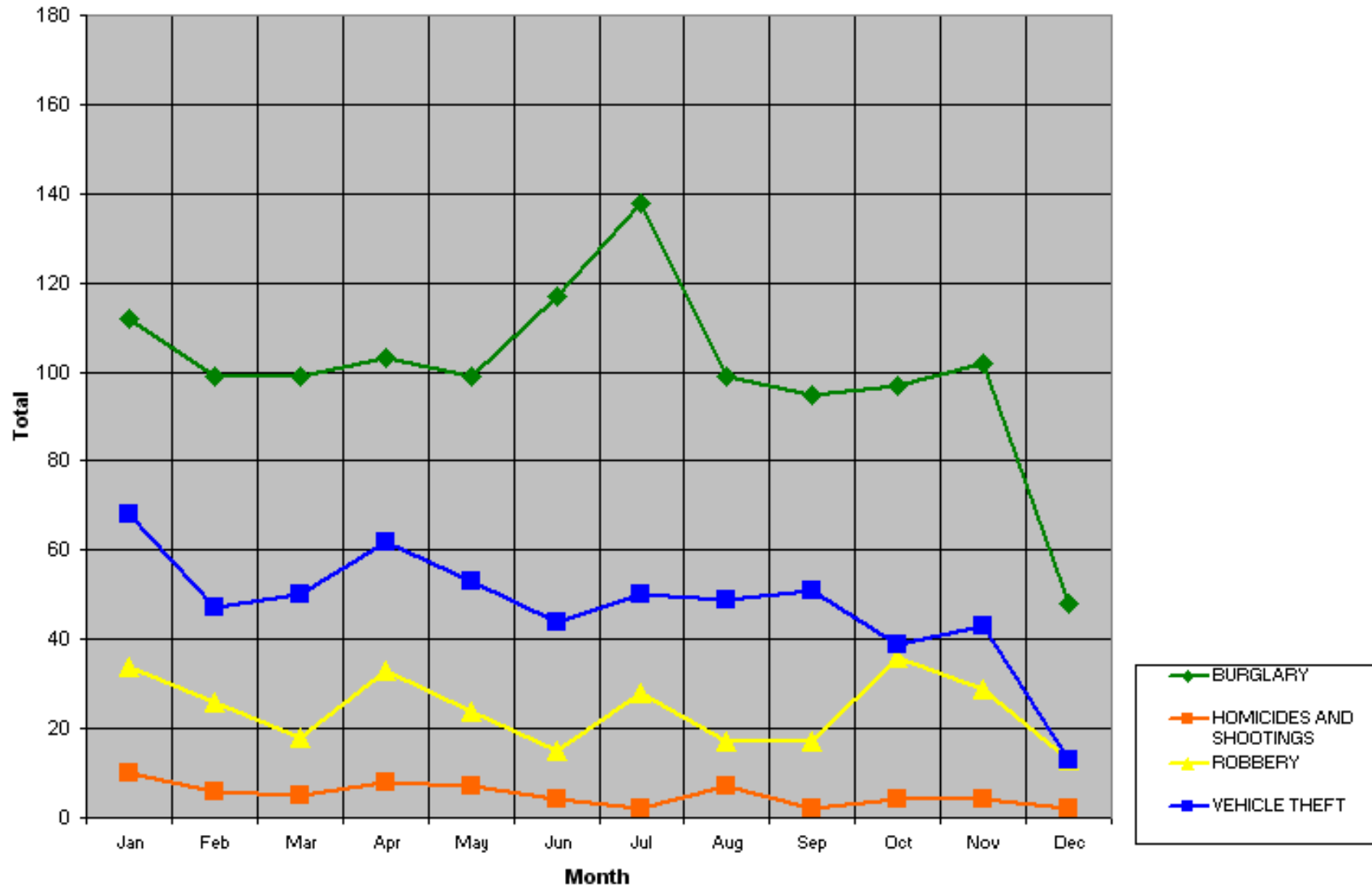
These data are drawn from the Oakland Police Department database, and they are unaudited. The numbers do not match the official monthly totals reported to the FBI through the Uniform Crime Reporting (UCR) program. Crime statistics can be affected by late reporting, the reclassification or unbounding of crimes, or the geocoding process. *The only certified statistics are those contained in the UCR.*

North Oakland Reported Crimes 1 Aug - 5 Dec 09

	August	September	October	November	December
BURGLARY - AUTO	54	39	47	41	13
BURGLARY - COMMERCIAL	3	13	10	5	3
BURGLARY - OTHER	2	2	2	1	1
BURGLARY - RESIDENTIAL	37	37	37	48	27
CARJACKINGS	0	1	1	2	0
HOMICIDES OR SHOOTINGS	7	2	4	4	1
RESIDENTIAL OR ATM ROBBERIES	1	1	2	1	1
ROBBERY	16	15	33	26	12
VEHICLE THEFT	48	50	39	43	13

These data are drawn from the Oakland Police Department database, and they are unaudited. The numbers do not match the official monthly totals reported to the FBI through the Uniform Crime Reporting (UCR) program. Crime statistics can be affected by late reporting, the reclassification or unbounding of crimes, or the geocoding process. *The only certified statistics are those contained in the UCR.*

Month to Month Crime Totals in North Oakland in 2009

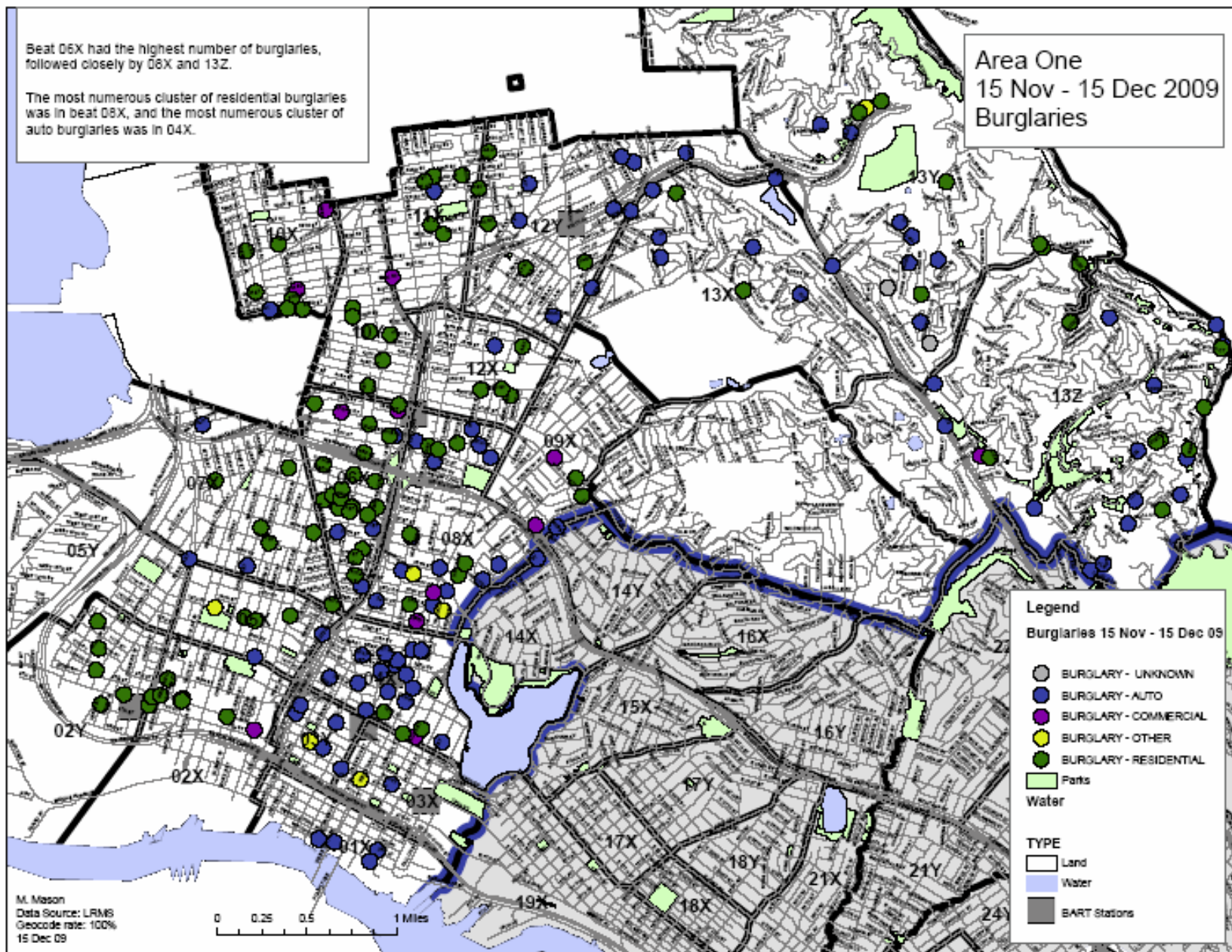


These data are drawn from the Oakland Police Department database, and they are unaudited. The numbers do not match the official monthly totals reported to the FBI through the Uniform Crime Reporting (UCR) program. Crime statistics can be affected by late reporting, the reclassification or unfounding of crimes, or the geocoding process. *The only certified statistics are those contained in the UCR.*

Beat 06X had the highest number of burglaries, followed closely by 08X and 13Z.

The most numerous cluster of residential burglaries was in beat 08X, and the most numerous cluster of auto burglaries was in 04X.

Area One
15 Nov - 15 Dec 2009
Burglaries



M. Mason
Data Source: LRMS
Geocode rate: 100%
15 Dec 09

0 0.25 0.5 1 Miles

Legend
Burglaries 15 Nov - 15 Dec 09

- BURGLARY - UNKNOWN
- BURGLARY - AUTO
- BURGLARY - COMMERCIAL
- BURGLARY - OTHER
- BURGLARY - RESIDENTIAL

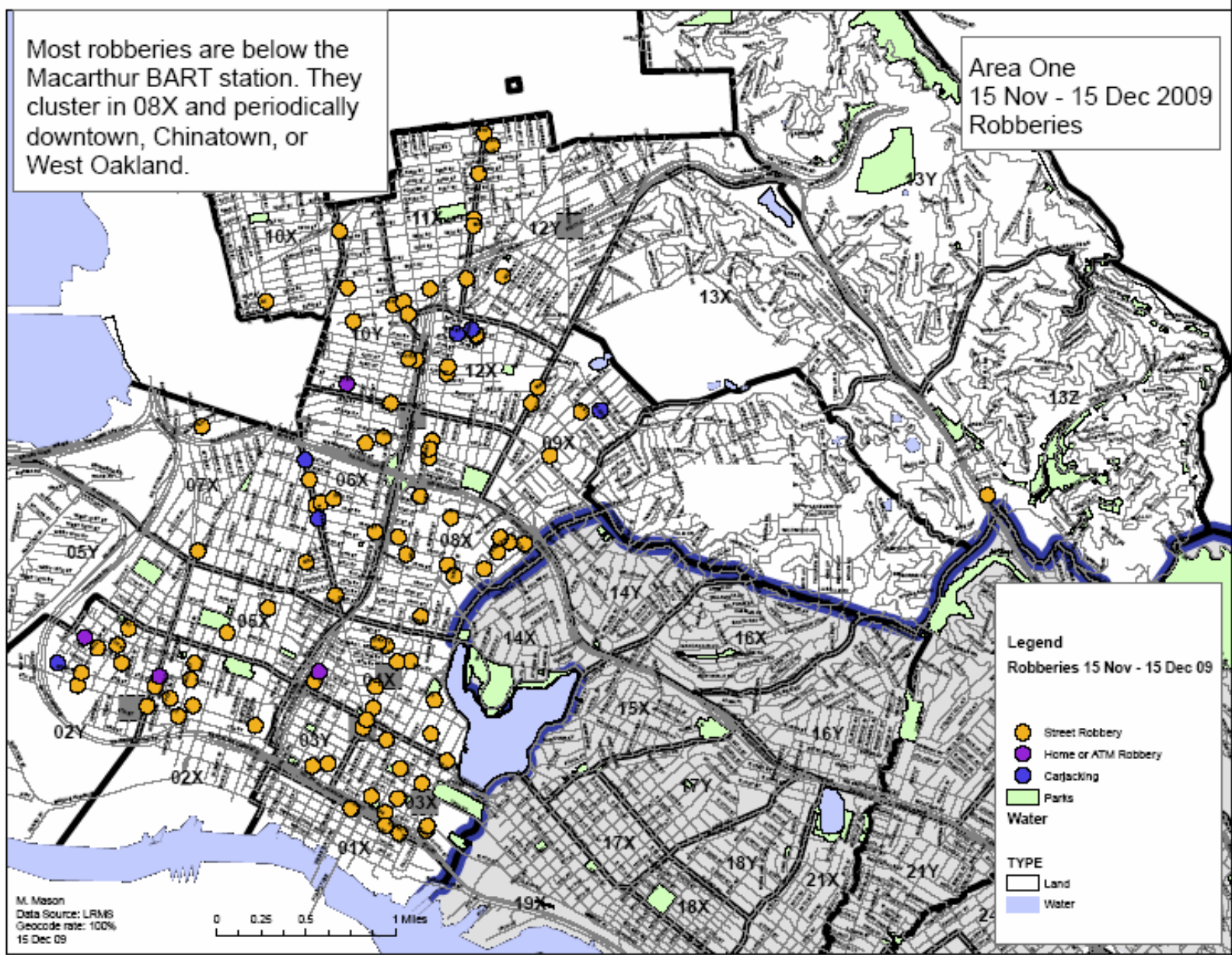
Parks
Water

TYPE

- Land
- Water
- BART Stations

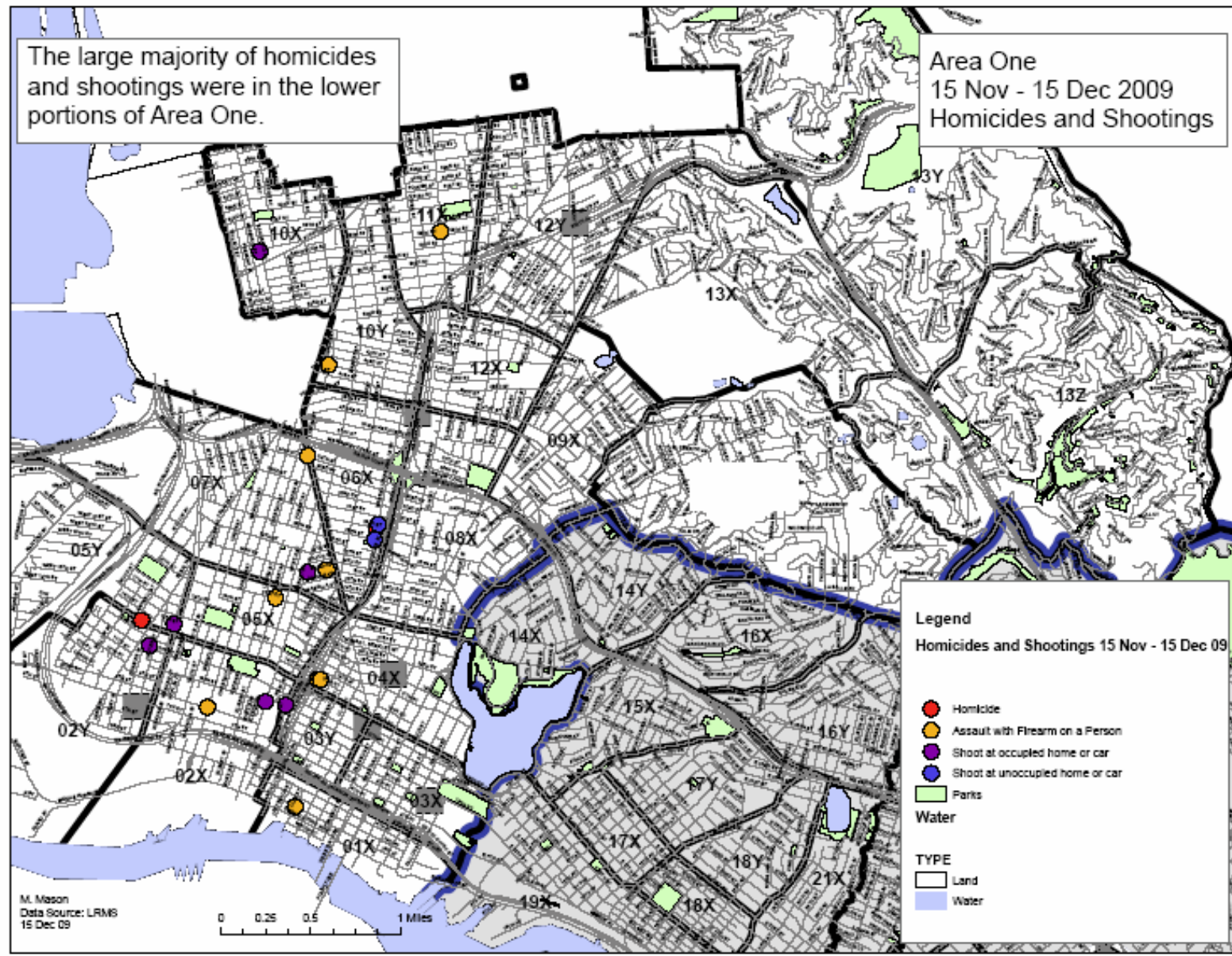
Most robberies are below the Macarthur BART station. They cluster in 08X and periodically downtown, Chinatown, or West Oakland.

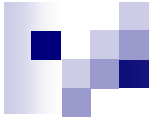
Area One
15 Nov - 15 Dec 2009
Robberies



The large majority of homicides and shootings were in the lower portions of Area One.

Area One
15 Nov - 15 Dec 2009
Homicides and Shootings





Crimes by Beat
15 Nov - 15 Dec 09

Homicides and Shootings	
05Y	3
06X	3
07X	3
02X	2
03Y	2
04X	2
11X	1
01X	1
02Y	1
05X	1
10X	1
10Y	1

Robberies	
08X	17
04X	12
03X	11
12X	11
06X	10
02X	9
02Y	8
10Y	7
12Y	6
07X	4
09X	4
03Y	3
05X	3
11X	3
01X	2
10X	1
13Z	1

Burglaries	
06X	27
08X	26
13Z	26
04X	20
13Y	16
13X	12
12Y	11
07X	9
10X	9
02X	8
11X	8
05X	7
10Y	7
09X	6
12X	6
02Y	5
03X	5
01X	4
03Y	4
02X	1

These data are drawn from the Oakland Police Department database, and they are unaudited. The numbers do not match the official monthly totals reported to the FBI through the Uniform Crime Reporting (UCR) program. Crime statistics can be affected by late reporting, the reclassification or unbounding of crimes, or the geocoding process. *The only certified statistics are those contained in the UCR.*



North Oakland Crimes by Times of Day

Homicides and Shootings	mostly between 2:00 PM and 11:00 PM
Burglaries	mostly between 9:00 AM and midnight
Robberies	mostly between 5:00 PM and 11:00 PM

These data are drawn from the Oakland Police Department database, and they are unaudited. The numbers do not match the official monthly totals reported to the FBI through the Uniform Crime Reporting (UCR) program. Crime statistics can be affected by late reporting, the reclassification or unbounding of crimes, or the geocoding process. *The only certified statistics are those contained in the UCR.*



North Oakland Victims by Sex

BURGLARY	FEMALE	47
	MALE	51
CARJACKING	MALE	3
ROBBERY	FEMALE	18
	MALE	19

These data are drawn from the Oakland Police Department database, and they are unaudited. The numbers do not match the official monthly totals reported to the FBI through the Uniform Crime Reporting (UCR) program. Crime statistics can be affected by late reporting, the reclassification or unbounding of crimes, or the geocoding process. *The only certified statistics are those contained in the UCR.*

North Oakland Victims by Race

CRIME	RACE	COUNT
ASSAULT WITH FIREARM	BLACK	5
	CHINESE	1
	HISPANIC	1
BURGLARY	BLACK	44
	CHINESE	7
	FILIPINO	1
	HISPANIC	12
	JAPANESE	2
	OTHER	8
	OTHER ASIAN	14
	UNKNOWN	10
	UNKNOWN	1
	VIETNAMESE	3
WHITE	93	
CARJACKING	BLACK	6
	HISPANIC	1
	KOREAN	1
	WHITE	1
HOMICIDE	BLACK	2
ROBBERY	BLACK	25
	CHINESE	12
	HISPANIC	9
	JAPANESE	1
	KOREAN	3
	OTHER	2
	OTHER	2
	OTHER ASIAN	11
	UNKNOWN	1
	VIETNAMESE	1
WHITE	44	
SHOOTING OCCUPIED HOUSE/CAR	BLACK	3
	UNKNOWN	1
SHOOTING UNOCCUPIED HOUSE/CAR	BLACK	1
	WHITE	1

These data are drawn from the Oakland Police Department database, and they are unaudited. The numbers do not match the official monthly totals reported to the FBI through the Uniform Crime Reporting (UCR) program. Crime statistics can be affected by late reporting, the reclassification or unbounding of crimes, or the geocoding process. *The only certified statistics are those contained in the UCR.*



North Oakland Victims by Age Range

CRIME	AGE RANGE
ASSAULT WITH FIREARM	MOSTLY 20s - 40s
BURGLARY	MOSTLY 20s - 50s
CARJACKING	MOSTLY 20s - 50s
HOMICIDE	MOSTLY TEENS - 20s
ROBBERY	MOSTLY 20s - 50s
SHOOTING OCCUPIED HOUSE/CAR	MOSTLY 40s
SHOOTING UNOCCUPIED HOUSE/CAR	RANGE ALL ADULTS

These data are drawn from the Oakland Police Department database, and they are unaudited. The numbers do not match the official monthly totals reported to the FBI through the Uniform Crime Reporting (UCR) program. Crime statistics can be affected by late reporting, the reclassification or unbounding of crimes, or the geocoding process. *The only certified statistics are those contained in the UCR.*



Robbery Suspects' Modus Operandi

- Victims are usually alone.
- Two or more suspects approach victim.
- Suspect's partner is waiting in a nearby car.
- Approximately half the time, the suspects approach the victim face to face. Approximately half the time, the suspects grab the victim from behind. Most suspects search the victim's pockets.
- Victims are usually walking; sometimes they are just exiting or approaching their vehicle or residence.



Burglary Prevention Tips

- Keep all windows and doors locked at all times.
- Keep valuables such as electronic equipment away from windows.